

# MLS Statistics

December 2013 - Placer County

## RESIDENTIAL ONLY (Single Family Homes)

Preliminary Report

	Current Month	Last Month	% Change	Last Year	% Change
New Listings Published	301	438	-31.3%	305	-1.3%
Listing Inventory	804	877	-8.3%	526	52.9%
Number of New Escrows	185	324	-42.9%	295	-37.3%
Number of Closed Escrows	383	356	7.6%	460	-16.7%
Median (1)	\$358,000	\$359,000	-0.3%	\$299,975	19.3%
Mean (2)	\$402,515	\$404,505	-0.5%	\$339,780	18.5%
Mode (3)	\$300,000 to \$349,999	\$350,000 to \$399,999	NA	\$250,000 to \$299,999	NA

## YEAR-TO-DATE STATISTICS

	01/01/13 to 12/31/13	01/01/13 to 11/30/13	01/01/12 to 12/31/12	% Change
New Listings Published	6,372	6,071	5,579	14.2%
Number of New Escrows Opened	4,060	3,875	4,483	-9.4%
Number of Closed Escrows	5,580	5,188	5,665	-1.5%
Dollar Volume of Closed Escrows	\$2,165,171,055	\$2,009,002,972	\$1,812,298,852	19.5%
Median	\$350,000	\$349,950	\$280,000	25.0%
Mean	\$388,023	\$387,240	\$319,912	21.3%

## PRICE BRACKET OF SALES BASED ON FINAL SALES

Selling Price	Singlefamily Residential	Percent of Total	Condos	Resid. Income	Resid. Lots/Land
UNDER \$69,999	0	0.0%	1	0	3
\$70,000-\$79,999	0	0.0%	1	0	0
\$80,000-\$89,999	0	0.0%	1	0	0
\$90,000-\$99,999	0	0.0%	0	0	0
\$100,000-\$119,999	0	0.0%	1	0	0
\$120,000-\$139,999	0	0.0%	3	0	2
\$140,000-\$159,999	3	0.8%	2	0	1
\$160,000-\$179,999	4	1.0%	4	0	0
\$180,000-\$199,999	9	2.3%	4	0	0
\$200,000-\$249,999	35	9.1%	6	1	1
\$250,000-\$299,999	54	14.1%	0	2	1
\$300,000-\$349,999	70	18.3%	0	0	2
\$350,000-\$399,999	69	18.0%	0	0	2
\$400,000-\$449,999	44	11.5%	0	0	0
\$450,000-\$499,999	32	8.4%	0	0	0
\$500,000-\$749,999	44	11.5%	0	0	0
\$750,000-\$999,999	10	2.6%	0	0	0
OVER \$1,000,000	9	2.3%	0	0	0
<b>TOTAL</b>	<b>383</b>		<b>23</b>	<b>3</b>	<b>12</b>

### Selling Prices of Classes Listed Above

\$89,999 or less	1.4%
\$90,000-\$139,999	1.4%
\$140,000-\$179,999	3.3%
\$180,000-\$299,999	26.8%
\$300,000-\$399,999	34.0%
\$400,000-\$749,999	28.5%
\$750,000 and over	4.5%



## TYPE OF FINANCING OF UNITS SOLD

Financing	# of Units
Cash	68
Conventional	218
FHA	75
VA	29
Other	21

## LENGTH OF TIME ON MARKET

Days on Market	# of units	% of total
1-30 Days	230	56.0%
31-60 Days	97	23.6%
61-90 Days	48	11.7%
91-120 Days	16	3.9%
121+Days	20	4.9%

This representation is based in whole or part on data supplied by MetroList. MetroList does not guarantee nor is it in any way responsible for its accuracy. Data maintained by MetroList may not reflect all real estate activity in the market. All information provided is deemed reliable but is not guaranteed and should be independently verified.

1. Median: The midpoint at which an equal number of homes sold above and below this value.
2. Mean: The arithmetic average of the total number of residential sales divided into total residential sales dollar volume.
3. Mode: The price range within which the most number of homes were sold.



# Home Sales Report - November 2013

Number of New Listing:	301	Total Sales Reported Last Month:	356
Number of New Listings Last Month:	438	Sales Volume:	\$154,163,238
Total Sales Reported:	383	Average Sales Price:	\$402,515

*These figures are based on MetroList Multiple Listing Service Data. Compiled monthly by PCAR, (916) 624-8271*

ALL AREAS		# Sold	Avg. Sale Price	Last Month	Last Year	
Total Sales	383	Condos	23	\$163,437	\$157,544	\$99,243
Pending Sales	185	Houses	383	\$402,515	\$404,505	\$339,780
Total Number of Listings	804	2 Bedrooms	52	\$347,210	\$306,395	\$277,266
Median Sales Price	\$358,000	3 Bedrooms	162	\$318,742	\$321,929	\$290,434
Average Sales Price	\$402,515	4+ Bedrooms	169	\$499,835	\$518,165	\$405,578

## Breakdown By Areas

Area 12747, 12661, 12668, 12678 Roseville				Last Year	Area 12650, 12663 Loomis, Penryn				Last Year
Total Sales:	157			165	Total Sales:	9			18
Pending Sales	61			108	Pending Sales	6			9
Total Number of Listings	253			252	Total Number of Listings	44			46
Median Sales Price	\$356,000		\$300,000		Median Sales Price	\$400,000		\$337,750	
Average Sales Price	\$373,823		\$305,892		Average Sales Price	\$383,040		\$406,183	
	<u>#Sold</u>	<u>Avg. Sales Price</u>	<u>Last Month</u>			<u>#Sold</u>	<u>Avg. Sales Price</u>	<u>Last Month</u>	<u>Last Year</u>
Condos	9	\$146,296	\$162,833	\$118,414	Condos	0	\$0	\$0	\$0
Houses	157	\$373,823	\$368,193	\$305,892	Houses	9	\$383,040	\$497,575	\$406,183
2 Bedrooms	13	\$292,500	\$249,823	\$234,808	2 Bedrooms	2	\$489,500	\$0	\$330,500
3 Bedrooms	63	\$325,526	\$337,789	\$267,544	3 Bedrooms	6	\$333,894	\$358,650	\$324,680
4+ Bedrooms	81	\$424,439	\$431,348	\$353,024	4+ Bedrooms	1	\$465,000	\$636,500	\$533,429

Area 12746 Granite Bay				Last Year	Area 12201-12208 Lincoln				Last Year
Total Sales:	30			32	Total Sales:	74			91
Pending Sales	10			13	Pending Sales	38			56
Total Number of Listings	91			72	Total Number of Listings	130			167
Median Sales Price	\$687,500		\$571,000		Median Sales Price	\$339,500		\$275,000	
Average Sales Price	\$771,331		\$702,065		Average Sales Price	\$356,621		\$310,255	
	<u>#Sold</u>	<u>Avg. Sales Price</u>	<u>Last Month</u>	<u>Last Year</u>		<u>#Sold</u>	<u>Avg. Sales Price</u>	<u>Last Month</u>	<u>Last Year</u>
Condos	0	\$0	\$0	\$0	Condos	6	\$187,717	\$0	\$102,000
Houses	30	\$771,331	\$832,138	\$702,065	Houses	74	\$356,621	\$342,977	\$310,255
2 Bedrooms	1	\$410,000	\$0	\$0	2 Bedrooms	29	\$383,514	\$388,389	\$354,958
3 Bedrooms	7	\$449,556	\$404,000	\$548,572	3 Bedrooms	21	\$293,600	\$287,452	\$258,700
4+ Bedrooms	22	\$890,139	\$925,212	\$753,229	4+ Bedrooms	24	\$379,269	\$372,579	\$321,237

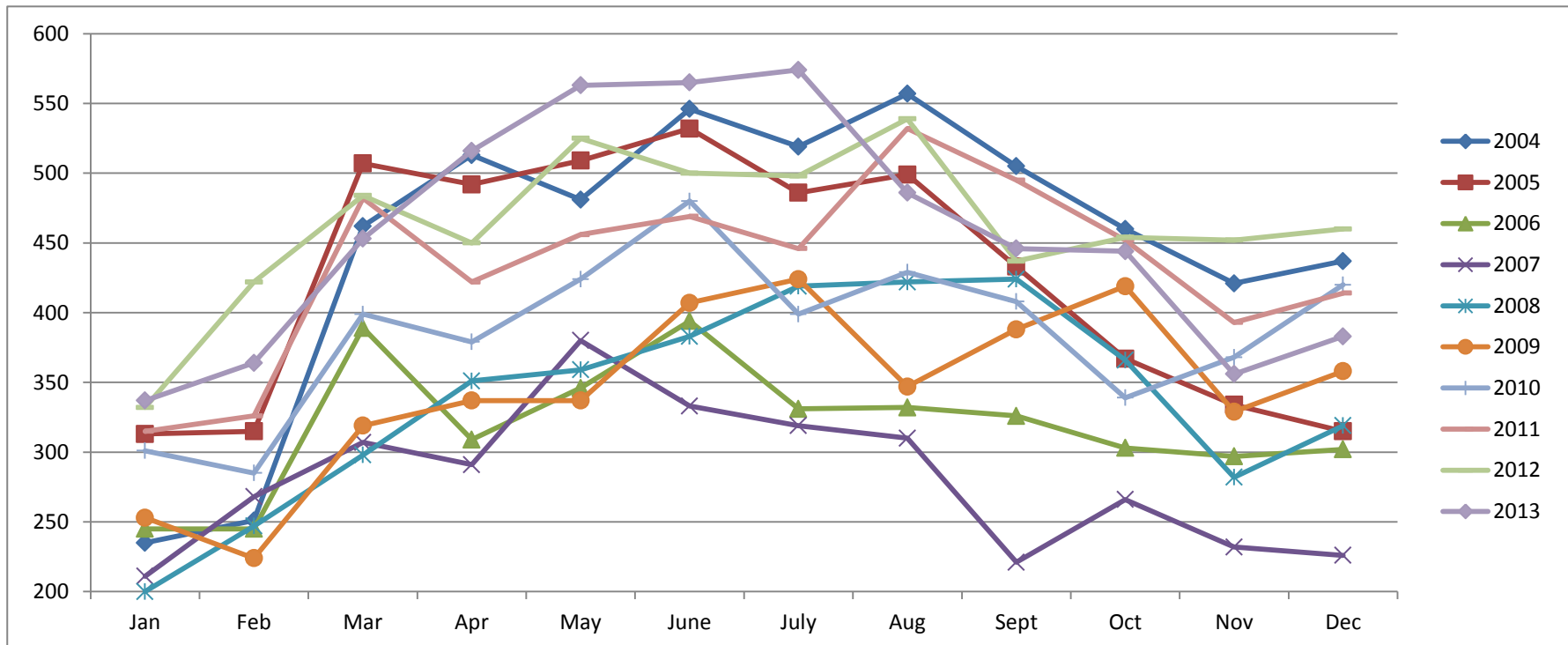
Area 12301, 12306, 12307, 12658, Auburn, Newcastle				Last Year	Area 12302, 12303, 12305 MV, GV, CX, AG, Wei, BC				Last Year
Total Sales:	34			44	Total Sales:	19			32
Pending Sales	24			42	Pending Sales	7			25
Total Number of Listings	84			131	Total Number of Listings	69			85
Median Sales Price	\$371,000		\$324,950		Median Sales Price	\$269,000		\$252,000	
Average Sales Price	\$405,244		\$343,664		Average Sales Price	\$356,109		\$254,561	
	<u>#Sold</u>	<u>Avg. Sales Price</u>	<u>Last Month</u>	<u>Last Year</u>		<u>#Sold</u>	<u>Avg. Sales Price</u>	<u>Last Month</u>	<u>Last Year</u>
Condos	3	\$93,667	\$163,589	\$55,929	Condos	0	\$0	\$0	\$0
Houses	34	\$405,244	\$380,964	\$343,664	Houses	19	\$356,109	\$408,789	\$254,561
2 Bedrooms	0	\$0	\$256,571	\$246,000	2 Bedrooms	1	\$219,500	\$166,950	\$161,905
3 Bedrooms	23	\$330,670	\$359,258	\$323,613	3 Bedrooms	15	\$274,855	\$255,333	\$308,112
4+ Bedrooms	11	\$561,173	\$497,614	\$424,982	4+ Bedrooms	3	\$807,917	\$723,495	\$257,800

Area 12677, 12765 Rocklin				Last Year	Area 12304 Foresthill				Last Year
Total Sales:	52			75	Total Sales:	7			8
Pending Sales	32			41	Pending Sales	7			10
Total Number of Listings	103			94	Total Number of Listings	22			36
Median Sales Price	\$354,000		\$309,000		Median Sales Price	\$220,000		\$179,000	
Average Sales Price	\$380,242		\$332,587		Average Sales Price	\$261,273		\$196,750	
	<u>#Sold</u>	<u>Avg. Sales Price</u>	<u>Last Month</u>	<u>Last Year</u>		<u>#Sold</u>	<u>Avg. Sales Price</u>	<u>Last Month</u>	<u>Last Year</u>
Condos	5	\$207,020	\$144,875	\$126,950	Condos	0	\$0	\$0	\$0
Houses	52	\$380,242	\$388,148	\$332,587	Houses	7	\$261,273	\$225,991	\$196,750
2 Bedrooms	5	\$272,400	\$387,083	\$268,167	2 Bedrooms	1	\$160,000	\$162,950	\$58,000
3 Bedrooms	21	\$310,248	\$315,335	\$282,825	3 Bedrooms	5	\$243,783	\$240,000	\$225,167
4+ Bedrooms	26	\$457,515	\$431,464	\$369,645	4+ Bedrooms	1	\$450,000	\$0	\$165,000

# Placer County Association of REALTORS® (PCAR) Monthly Closed Escrows (2004-2013)

(Placer County Resale Homes)

	Jan	Feb	Mar	Apr	May	June	July	Aug	Sept	Oct	Nov	Dec
<b>2004</b>	235	251	462	513	481	546	519	557	505	460	421	437
<b>2005</b>	313	315	507	492	509	532	486	499	433	367	334	315
<b>2006</b>	245	245	389	309	346	394	331	332	326	303	297	302
<b>2007</b>	211	268	307	291	380	333	319	310	221	266	232	226
<b>2008</b>	200	247	298	351	359	383	419	422	424	366	282	319
<b>2009</b>	253	224	319	337	337	407	424	347	388	419	329	358
<b>2010</b>	301	285	399	379	424	480	399	429	408	339	368	420
<b>2011</b>	315	326	482	422	456	469	446	532	495	452	393	414
<b>2012</b>	332	422	484	450	525	500	498	539	437	454	452	460
<b>2013</b>	337	364	453	516	563	565	574	486	446	444	356	383

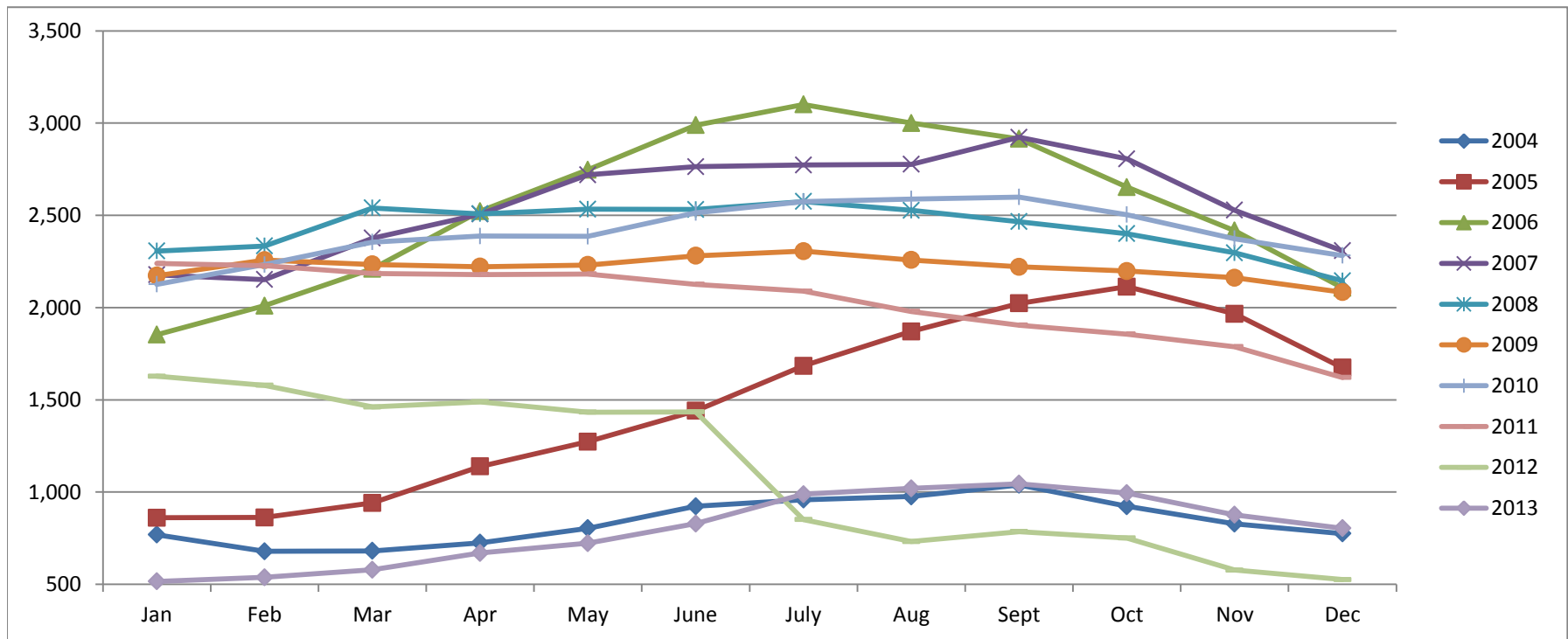


Based on MetroList™ Multiple Listing Service Data. Compiled monthly by PCAR, (916) 624-8271.

# Placer County Association of REALTORS® (PCAR) Total Listing Inventory by Month (2004-2013)

(Placer County Resale Homes)

	Jan	Feb	Mar	Apr	May	June	July	Aug	Sept	Oct	Nov	Dec
<b>2004</b>	769	679	681	725	804	923	959	976	1,039	923	828	775
<b>2005</b>	861	862	941	1,139	1,273	1,441	1,684	1,871	2,023	2,113	1,966	1,674
<b>2006</b>	1,853	2,010	2,210	2,523	2,747	2,989	3,101	3,000	2,915	2,653	2,417	2,107
<b>2007</b>	2,178	2,152	2,376	2,507	2,720	2,764	2,773	2,777	2,923	2,806	2,528	2,308
<b>2008</b>	2,307	2,334	2,540	2,508	2,533	2,532	2,575	2,527	2,466	2,401	2,297	2,145
<b>2009</b>	2,173	2,257	2,234	2,222	2,231	2,281	2,306	2,258	2,221	2,198	2,162	2,084
<b>2010</b>	2,126	2,233	2,355	2,388	2,386	2,514	2,574	2,589	2,599	2,504	2,373	2,282
<b>2011</b>	2,239	2,227	2,185	2,179	2,182	2,126	2,089	1,979	1,905	1,856	1,788	1,621
<b>2012</b>	1,628	1,579	1,461	1,489	1,433	1,435	851	732	786	751	577	526
<b>2013</b>	516	538	579	670	723	829	988	1,020	1,045	994	877	804

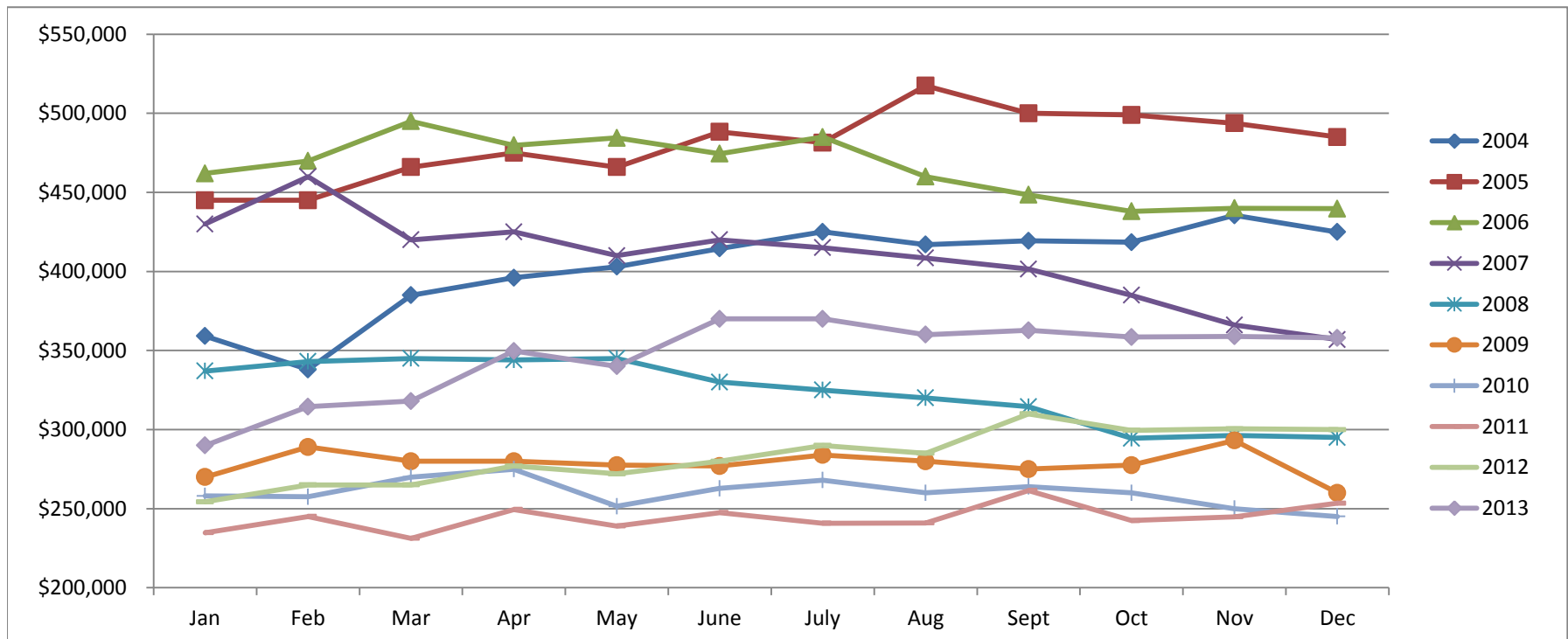


Based on MetroList™ Multiple Listing Service Data. Compiled monthly by PCAR, (916) 624-8271.

# Placer County Association of REALTORS® (PCAR) Median Price for Single-Family Detached Homes (2004-2013)

(Placer County Resale Homes)

	Jan	Feb	Mar	Apr	May	June	July	Aug	Sept	Oct	Nov	Dec
<b>2004</b>	\$359,100	\$338,000	\$385,000	\$396,000	\$403,000	\$414,500	\$425,000	\$417,000	\$419,350	\$418,500	\$435,500	\$424,975
<b>2005</b>	\$445,000	\$445,000	\$466,000	\$475,000	\$466,000	\$488,250	\$481,500	\$517,500	\$500,000	\$499,000	\$493,750	\$485,000
<b>2006</b>	\$462,000	\$469,900	\$495,000	\$479,800	\$484,500	\$474,500	\$485,000	\$460,000	\$448,500	\$438,000	\$439,974	\$439,700
<b>2007</b>	\$430,000	\$459,900	\$419,950	\$425,000	\$410,000	\$420,000	\$415,000	\$408,500	\$401,500	\$385,000	\$366,087	\$356,928
<b>2008</b>	\$337,000	\$343,000	\$345,000	\$344,000	\$345,000	\$330,000	\$325,000	\$320,000	\$314,450	\$294,450	\$296,217	\$295,000
<b>2009</b>	\$270,000	\$289,000	\$280,000	\$280,000	\$277,500	\$277,000	\$283,950	\$280,000	\$275,000	\$277,500	\$293,116	\$260,000
<b>2010</b>	\$258,000	\$257,500	\$270,000	\$274,950	\$251,500	\$262,803	\$268,000	\$260,000	\$264,000	\$260,000	\$250,000	\$245,000
<b>2011</b>	\$234,750	\$245,000	\$231,250	\$249,450	\$239,000	\$247,500	\$240,750	\$241,000	\$261,500	\$242,500	\$244,900	\$253,450
<b>2012</b>	\$254,325	\$265,000	\$265,000	\$277,000	\$272,000	\$280,000	\$290,000	\$285,000	\$310,000	\$299,500	\$300,500	\$299,975
<b>2013</b>	\$290,000	\$314,500	\$318,000	\$349,700	\$340,000	\$370,000	\$370,000	\$360,000	\$362,750	\$358,500	\$359,000	\$358,000

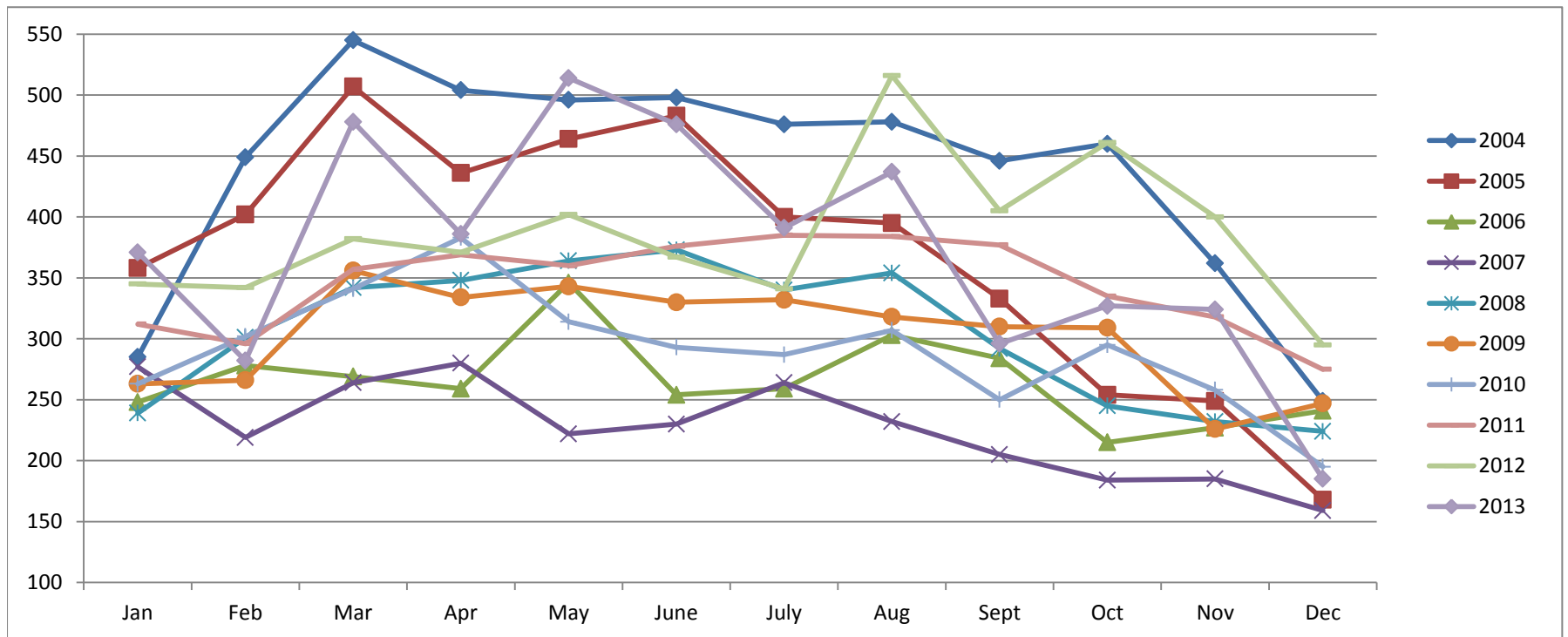


Based on MetroList™ Multiple Listing Service Data. Compiled monthly by PCAR, (916) 624-8271.

# Placer County Association of REALTORS® (PCAR) Monthly New Sales Opened (2004-2013)

(Placer County Resale Homes)

	Jan	Feb	Mar	Apr	May	June	July	Aug	Sept	Oct	Nov	Dec
<b>2004</b>	285	449	545	504	496	498	476	478	446	460	362	249
<b>2005</b>	358	402	507	436	464	483	400	395	333	254	249	168
<b>2006</b>	248	278	269	259	346	254	259	303	284	215	227	241
<b>2007</b>	277	219	264	280	222	230	264	232	205	184	185	159
<b>2008</b>	239	301	342	348	364	373	340	354	292	245	232	224
<b>2009</b>	263	266	356	334	343	330	332	318	310	309	226	247
<b>2010</b>	263	302	341	383	314	293	287	307	250	295	258	195
<b>2011</b>	312	296	357	369	360	376	385	384	377	335	318	275
<b>2012</b>	345	342	382	371	402	367	341	516	405	461	400	295
<b>2013</b>	371	282	478	386	514	476	391	437	296	327	324	185



Based on MetroList™ Multiple Listing Service Data. Compiled monthly by PCAR, (916) 624-8271.