

MLS Statistics

December 2010 - Placer County

RESIDENTIAL ONLY (Single Family Homes)

Preliminary Report

	Current Month	Last Month	% Change	Last Year	% Change
New Listings Published	425	469	-9.4%	495	-14.1%
Listing Inventory	2,282	2,373	-3.8%	2,084	9.5%
Number of New Escrows	195	258	-24.4%	247	-21.1%
Number of Closed Escrows	420	368	14.1%	358	17.3%
Median (1)	\$245,000	\$250,000	-2.0%	\$260,000	-5.8%
Mean (2)	\$315,952	\$321,826	-1.8%	\$327,586	-3.6%
Mode (3)	\$200,000 to \$249,999	\$200,000 to \$249,999	NA	\$250,000 to \$299,999	NA

YEAR-TO-DATE STATISTICS

	01/01/10 to 11/30/10	01/01/10 to 11/30/10	01/01/09 to 12/31/09	% Change
New Listings Published	7,606	7,181	6,906	10.1%
Number of New Escrows Opened	3,488	3,293	3,737	-6.7%
Number of Closed Escrows	4,796	4,368	4,142	15.8%
Dollar Volume of Closed Escrows	\$1,572,278,958	\$1,436,932,027	\$1,300,567,719	20.9%
Median	\$260,000	\$260,000	\$260,000	0.0%
Mean	\$327,831	\$328,968	\$327,586	0.1%

PRICE BRACKET OF SALES BASED ON FINAL SALES

Selling Price	Singlefamily Residential	Percent of Total	Condos	Resid. Income	Resid. Lots/Land
UNDER \$69,999	1	0.2%	2	0	2
\$70,000-\$79,999	1	0.2%	0	0	1
\$80,000-\$89,999	0	0.0%	3	0	0
\$90,000-\$99,999	3	0.7%	5	0	2
\$100,000-\$119,999	3	0.7%	7	0	1
\$120,000-\$139,999	8	1.9%	4	1	2
\$140,000-\$159,999	14	3.3%	6	0	0
\$160,000-\$179,999	25	6.0%	4	0	0
\$180,000-\$199,999	26	6.2%	3	1	0
\$200,000-\$249,999	98	23.3%	0	1	1
\$250,000-\$299,999	71	16.9%	0	0	1
\$300,000-\$349,999	53	12.6%	0	0	0
\$350,000-\$399,999	34	8.1%	0	0	0
\$400,000-\$449,999	25	6.0%	0	0	0
\$450,000-\$499,999	14	3.3%	0	0	0
\$500,000-\$749,999	32	7.6%	0	0	0
\$750,000-\$999,999	7	1.7%	0	0	0
OVER \$1,000,000	5	1.2%	0	0	0
TOTAL	420		34	3	10

Selling Prices of Classes Listed Above

\$89,999 or less	2.1%
\$90,000-\$139,999	7.7%
\$140,000-\$179,999	10.5%
\$180,000-\$299,999	43.3%
\$300,000-\$399,999	18.6%
\$400,000-\$749,999	15.2%
\$750,000 and over	2.6%



TYPE OF FINANCING OF UNITS SOLD

Financing	# of Units
Cash	92
Conventional	183
FHA	93
VA	0
Other	28

LENGTH OF TIME ON MARKET

Days on Market	# of units	% of total
1-30 Days	152	36.2%
31-60 Days	81	19.3%
61-90 Days	56	13.3%
91-120 Days	39	9.3%
121+Days	92	21.9%

This representation is based in whole or part on data supplied by MetroList. MetroList does not guarantee nor is it in any way responsible for its accuracy. Data maintained by MetroList may not reflect all real estate activity in the market. All information provided is deemed reliable but is not guaranteed and should be independently verified.

1. Median: The midpoint at which an equal number of homes sold above and below this value.
2. Mean: The arithmetic average of the total number of residential sales divided into total residential sales dollar volume.
3. Mode: The price range within which the most number of homes were sold.



Home Sales Report December 2010

Number of New Listing:	425	Total Sales Reported Last Month:	368
Number of New Listings Last Month:	469	Sales Volume:	\$132,699,831
Total Sales Reported:	420	Average Sales Price:	\$315,952

These figures are based on MetroList Multiple Listing Service Data. Compiled monthly by PCAR, (916) 624-8271

ALL AREAS		# Sold	Avg. Sale Price	Last Month	Last Year	
Total Sales	420	Condos	34	\$125,813	\$129,587	\$124,296
Pending Sales	195	Houses	420	\$315,952	\$321,826	\$327,586
Total Number of Listings	2,282	2 Bedrooms	48	\$254,025	\$256,012	\$262,770
Median Sales Price	\$245,000	3 Bedrooms	176	\$246,525	\$254,968	\$263,188
Average Sales Price	\$315,952	4+ Bedrooms	196	\$393,461	\$410,297	\$417,007

Breakdown By Areas

Area 12747, 12661, 12668, 12678 Roseville					Area 12650, 12663 Loomis, Penryn				
				Last Year					Last Year
Total Sales:	140			119	Total Sales:	14			17
Pending Sales	59			80	Pending Sales	8			9
Total Number of Listings	740			652	Total Number of Listings	76			89
Median Sales Price	\$225,000			\$257,000	Median Sales Price	\$297,425			\$375,000
Average Sales Price	\$289,772			\$316,759	Average Sales Price	\$369,057			\$452,059
	<u>#Sold</u>	<u>Avg. Sales Price</u>	<u>Last Month</u>	<u>Last Year</u>		<u>#Sold</u>	<u>Avg. Sales Price</u>	<u>Last Month</u>	<u>Last Year</u>
Condos	19	\$130,885	\$125,765	\$119,583	Condos	0	\$0	\$163,000	\$0
Houses	140	\$289,772	\$278,955	\$316,759	Houses	14	\$369,057	\$582,339	\$452,059
2 Bedrooms	8	\$200,000	\$189,330	\$195,000	2 Bedrooms	2	\$167,500	\$0	\$303,000
3 Bedrooms	74	\$234,182	\$231,937	\$271,155	3 Bedrooms	5	\$344,915	\$357,704	\$368,143
4+ Bedrooms	58	\$373,080	\$359,767	\$384,346	4+ Bedrooms	7	\$443,889	\$851,900	\$599,857

Area 12746 Granite Bay					Area 12201-12208 Lincoln				
				Last Year					Last Year
Total Sales:	23			19	Total Sales:	100			97
Pending Sales	8			14	Pending Sales	48			57
Total Number of Listings	131			161	Total Number of Listings	549			459
Median Sales Price	\$560,000			\$550,000	Median Sales Price	\$240,000			\$254,000
Average Sales Price	\$678,609			\$697,244	Average Sales Price	\$278,668			\$276,017
	<u>#Sold</u>	<u>Avg. Sales Price</u>	<u>Last Month</u>	<u>Last Year</u>		<u>#Sold</u>	<u>Avg. Sales Price</u>	<u>Last Month</u>	<u>Last Year</u>
Condos	0	\$0	\$0	\$0	Condos	6	\$131,500	\$134,955	\$150,000
Houses	23	\$678,609	\$595,941	\$697,244	Houses	100	\$278,668	\$280,320	\$276,017
2 Bedrooms	0	\$0	\$0	\$0	2 Bedrooms	19	\$355,132	\$328,315	\$320,632
3 Bedrooms	2	\$172,000	\$319,171	\$282,200	3 Bedrooms	35	\$212,874	\$238,844	\$226,616
4+ Bedrooms	21	\$726,857	\$725,100	\$845,474	4+ Bedrooms	46	\$297,145	\$280,219	\$312,491

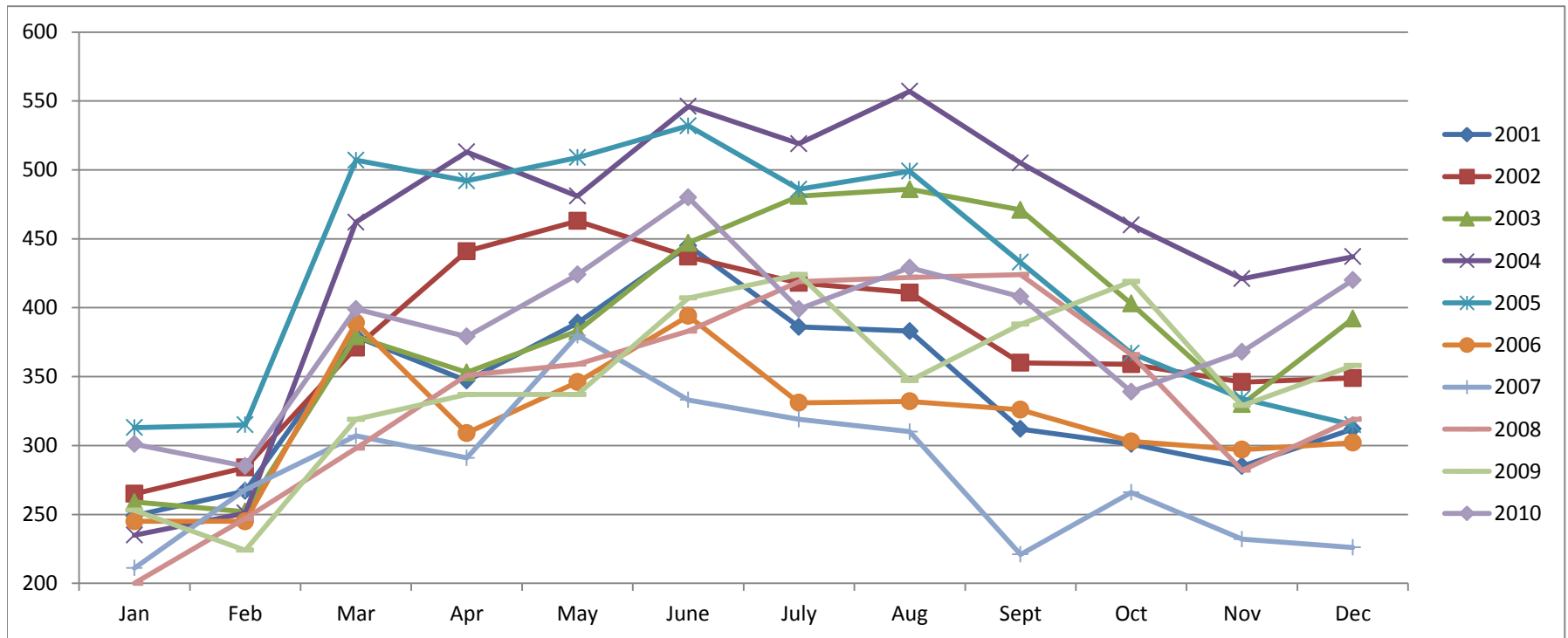
Area 12301, 12306, 12307, 12658, Auburn, Newcastle					Area 12302, 12303, 12305 MV,GV,CX,AG,Wei,BC				
				Last Year					Last Year
Total Sales:	43			27	Total Sales:	25			17
Pending Sales	24			17	Pending Sales	12			13
Total Number of Listings	231			240	Total Number of Listings	135			138
Median Sales Price	\$249,000			\$266,000	Median Sales Price	\$245,000			\$199,900
Average Sales Price	\$305,079			\$316,848	Average Sales Price	\$312,074			\$287,452
	<u>#Sold</u>	<u>Avg. Sales Price</u>	<u>Last Month</u>	<u>Last Year</u>		<u>#Sold</u>	<u>Avg. Sales Price</u>	<u>Last Month</u>	<u>Last Year</u>
Condos	5	\$90,100	\$65,667	\$100,250	Condos	0	\$0	\$0	\$0
Houses	43	\$305,079	\$289,534	\$316,848	Houses	25	\$312,074	\$270,679	\$287,452
2 Bedrooms	8	\$197,187	\$185,453	\$254,271	2 Bedrooms	7	\$174,207	\$186,667	\$156,000
3 Bedrooms	22	\$296,955	\$264,420	\$311,143	3 Bedrooms	11	\$310,309	\$281,056	\$249,229
4+ Bedrooms	13	\$385,223	\$430,379	\$403,167	4+ Bedrooms	7	\$452,714	\$350,000	\$481,600

Area 12677, 12765 Rocklin					Area 12304 Foresthill				
				Last Year					Last Year
Total Sales:	65			59	Total Sales:	9			4
Pending Sales	30			31	Pending Sales	4			4
Total Number of Listings	360			292	Total Number of Listings	46			54
Median Sales Price	\$265,000			\$265,000	Median Sales Price	\$237,500			\$213,000
Average Sales Price	\$305,825			\$307,880	Average Sales Price	\$229,581			\$261,225
	<u>#Sold</u>	<u>Avg. Sales Price</u>	<u>Last Month</u>	<u>Last Year</u>		<u>#Sold</u>	<u>Avg. Sales Price</u>	<u>Last Month</u>	<u>Last Year</u>
Condos	4	\$137,975	\$157,771	\$117,667	Condos	0	\$0	\$0	\$0
Houses	65	\$305,825	\$308,477	\$307,880	Houses	9	\$229,581	\$258,760	\$261,225
2 Bedrooms	4	\$178,438	\$259,698	\$232,500	2 Bedrooms	0	\$0	\$0	\$0
3 Bedrooms	21	\$247,242	\$237,020	\$258,233	3 Bedrooms	6	\$233,538	\$214,300	\$261,225
4+ Bedrooms	40	\$349,320	\$358,919	\$353,553	4+ Bedrooms	3	\$221,667	\$325,450	\$0

Placer County Association of REALTORS® (PCAR) Monthly Closed Escrows (2001-2010)

(Placer County Resale Homes)

	Jan	Feb	Mar	Apr	May	June	July	Aug	Sept	Oct	Nov	Dec
2001	249	267	379	347	389	445	386	383	312	301	285	312
2002	265	284	371	441	463	437	418	411	360	359	346	349
2003	259	252	379	353	383	447	481	486	471	403	330	392
2004	235	251	462	513	481	546	519	557	505	460	421	437
2005	313	315	507	492	509	532	486	499	433	367	334	315
2006	245	245	389	309	346	394	331	332	326	303	297	302
2007	211	268	307	291	380	333	319	310	221	266	232	226
2008	200	247	298	351	359	383	419	422	424	366	282	319
2009	253	224	319	337	337	407	424	347	388	419	329	358
2010	301	285	399	379	424	480	399	429	408	339	368	420

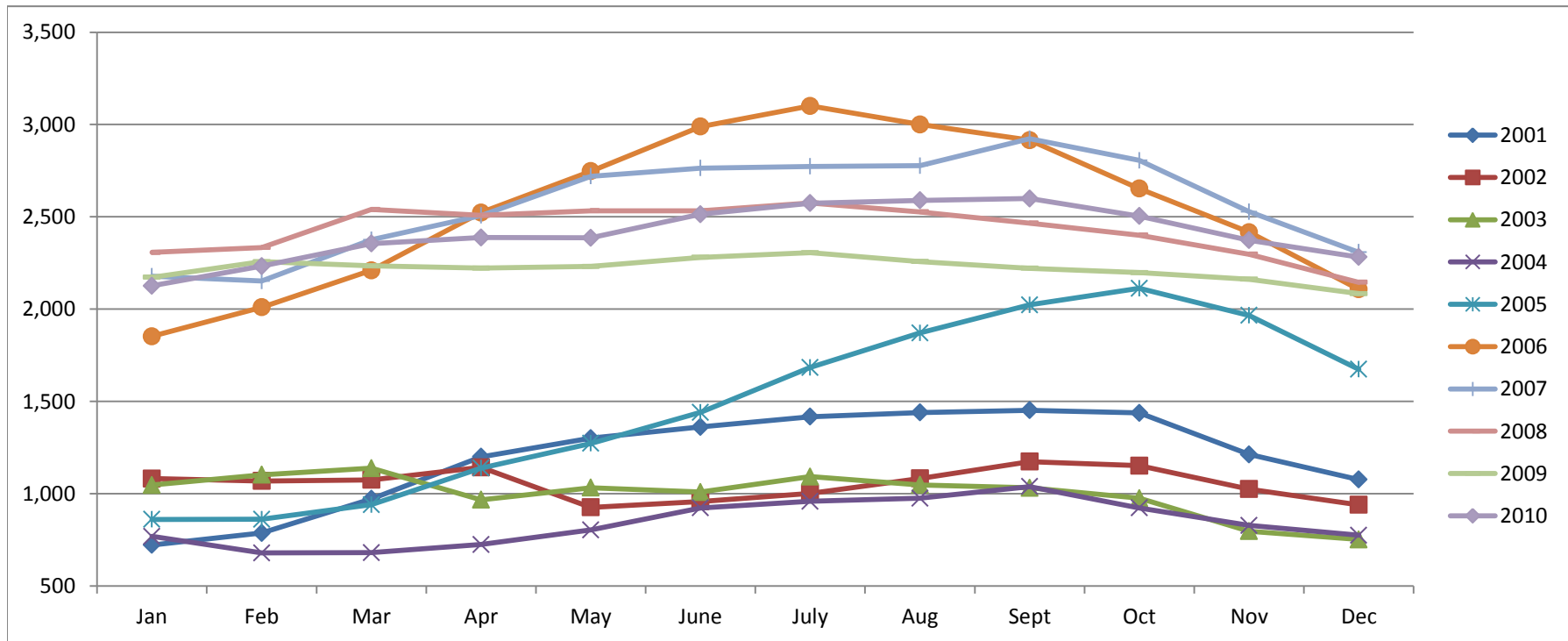


Based on MetroList™ Multiple Listing Service Data. Compiled monthly by PCAR, (916) 624-8271.

Placer County Association of REALTORS® (PCAR) Total Listing Inventory by Month (2001-2010)

(Placer County Resale Homes)

	Jan	Feb	Mar	Apr	May	June	July	Aug	Sept	Oct	Nov	Dec
2001	723	787	972	1,200	1,301	1,362	1,417	1,440	1,452	1,438	1,213	1,077
2002	1,082	1,069	1,075	1,143	926	958	1,002	1,083	1,174	1,152	1,025	940
2003	1,047	1,103	1,138	967	1,033	1,009	1,093	1,048	1,032	976	797	752
2004	769	679	681	725	804	923	959	976	1,039	923	828	775
2005	861	862	941	1,139	1,273	1,441	1,684	1,871	2,023	2,113	1,966	1,674
2006	1,853	2,010	2,210	2,523	2,747	2,989	3,101	3,000	2,915	2,653	2,417	2,107
2007	2,178	2,152	2,376	2,507	2,720	2,764	2,773	2,777	2,923	2,806	2,528	2,308
2008	2,307	2,334	2,540	2,508	2,533	2,532	2,575	2,527	2,466	2,401	2,297	2,145
2009	2,173	2,257	2,234	2,222	2,231	2,281	2,306	2,258	2,221	2,198	2,162	2,084
2010	2,126	2,233	2,355	2,388	2,386	2,514	2,574	2,589	2,599	2,504	2,373	2,282

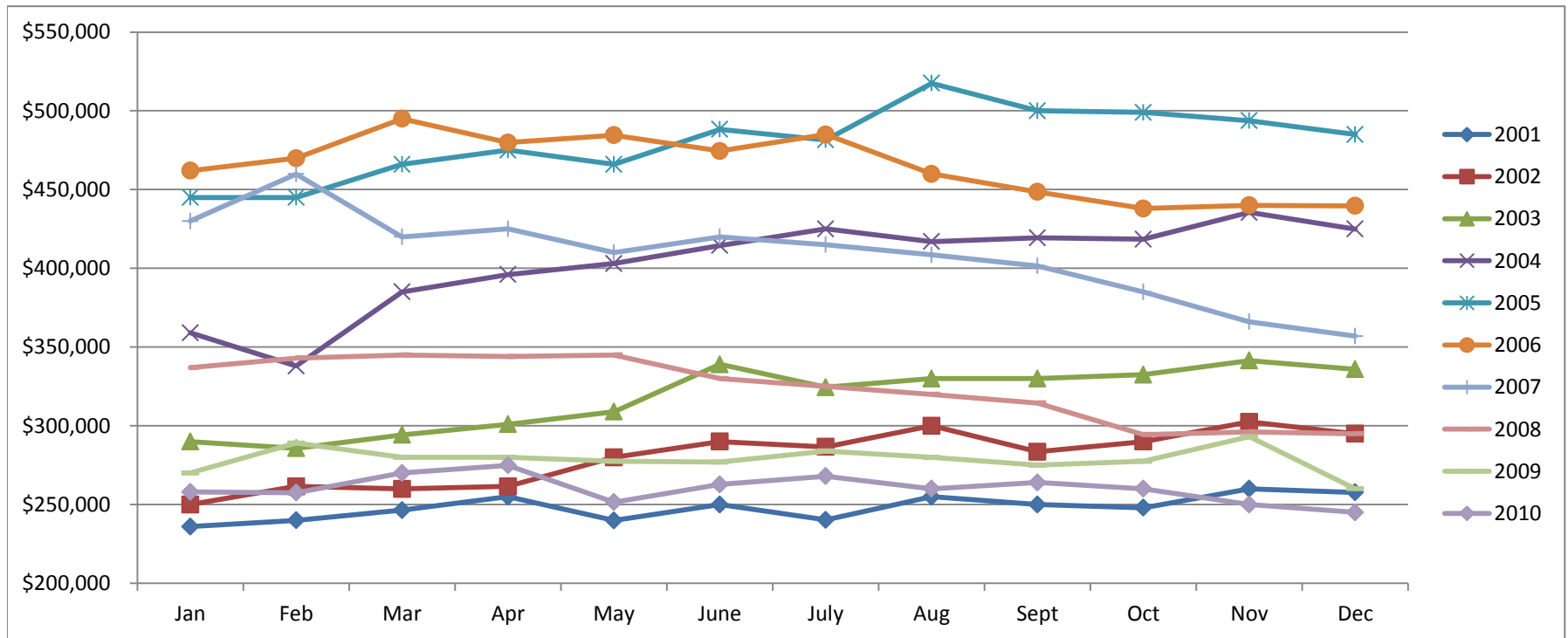


Based on MetroList™ Multiple Listing Service Data. Compiled monthly by PCAR, (916) 624-8271.

Placer County Association of REALTORS® (PCAR) Median Price for Single-Family Detached Homes (2001-2010)

(Placer County Resale Homes)

	Jan	Feb	Mar	Apr	May	June	July	Aug	Sept	Oct	Nov	Dec
2001	\$236,000	\$240,000	\$246,500	\$255,000	\$239,900	\$250,000	\$240,250	\$255,000	\$250,000	\$248,000	\$260,000	\$257,750
2002	\$250,000	\$261,500	\$259,900	\$261,500	\$279,950	\$290,000	\$286,600	\$300,000	\$283,500	\$290,000	\$302,500	\$295,000
2003	\$290,000	\$285,750	\$294,250	\$301,000	\$309,000	\$339,000	\$324,500	\$330,000	\$330,000	\$332,500	\$341,410	\$335,900
2004	\$359,100	\$338,000	\$385,000	\$396,000	\$403,000	\$414,500	\$425,000	\$417,000	\$419,350	\$418,500	\$435,500	\$424,975
2005	\$445,000	\$445,000	\$466,000	\$475,000	\$466,000	\$488,250	\$481,500	\$517,500	\$500,000	\$499,000	\$493,750	\$485,000
2006	\$462,000	\$469,900	\$495,000	\$479,800	\$484,500	\$474,500	\$485,000	\$460,000	\$448,500	\$438,000	\$439,974	\$439,700
2007	\$430,000	\$459,900	\$419,950	\$425,000	\$410,000	\$420,000	\$415,000	\$408,500	\$401,500	\$385,000	\$366,087	\$356,928
2008	\$337,000	\$343,000	\$345,000	\$344,000	\$345,000	\$330,000	\$325,000	\$320,000	\$314,450	\$294,450	\$296,217	\$295,000
2009	\$270,000	\$289,000	\$280,000	\$280,000	\$277,500	\$277,000	\$283,950	\$280,000	\$275,000	\$277,500	\$293,116	\$260,000
2010	\$258,000	\$257,500	\$270,000	\$274,950	\$251,500	\$262,803	\$268,000	\$260,000	\$264,000	\$260,000	\$250,000	\$245,000

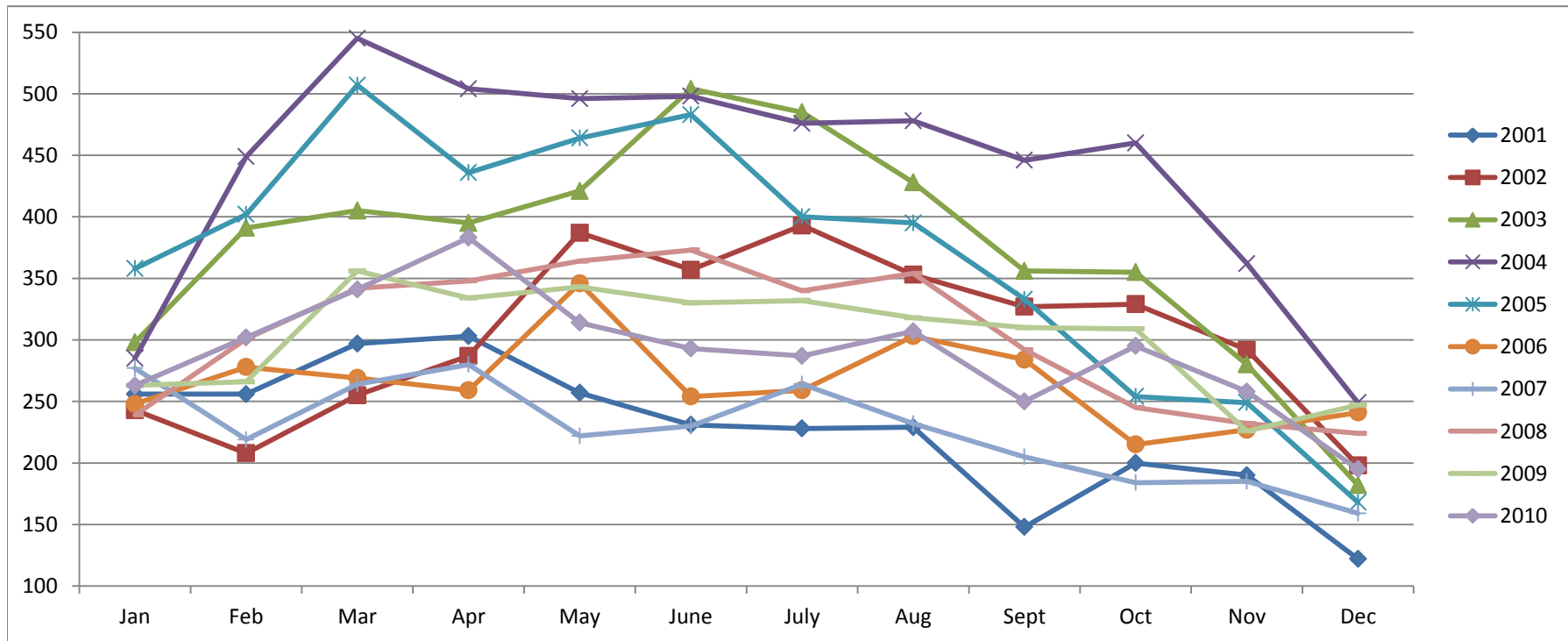


Based on MetroList™ Multiple Listing Service Data. Compiled monthly by PCAR, (916) 624-8271.

Placer County Association of REALTORS® (PCAR) Monthly New Sales Opened (2001-2010)

(Placer County Resale Homes)

	Jan	Feb	Mar	Apr	May	June	July	Aug	Sept	Oct	Nov	Dec
2001	256	256	297	303	257	231	228	229	148	200	190	122
2002	243	208	255	287	387	357	393	353	327	329	292	198
2003	298	391	405	395	421	504	485	428	356	355	280	182
2004	285	449	545	504	496	498	476	478	446	460	362	249
2005	358	402	507	436	464	483	400	395	333	254	249	168
2006	248	278	269	259	346	254	259	303	284	215	227	241
2007	277	219	264	280	222	230	264	232	205	184	185	159
2008	239	301	342	348	364	373	340	354	292	245	232	224
2009	263	266	356	334	343	330	332	318	310	309	226	247
2010	263	302	341	383	314	293	287	307	250	295	258	195



Based on MetroList™ Multiple Listing Service Data. Compiled monthly by PCAR, (916) 624-8271.